



## Load Pin System - Machine Information Worksheet

Company: \_\_\_\_\_ Date: \_\_\_\_\_

Contact and telephone number for all crane related information is:

\_\_\_\_\_

Crane info: Make: \_\_\_\_\_ Model: \_\_\_\_\_

Serial #: \_\_\_\_\_ Equipment or Project ID #: \_\_\_\_\_

Please indicate the maximum lifting capacity of the machine in relationship to where the load pin will be installed? \_\_\_\_\_ LBS or KG's (please circle one)

Please indicate the minimum working load by which load indication will be required in the operation of the crane \_\_\_\_\_ LBS or KG's (please circle one)

\*\*\*\*\*

### General

Please ensure that all information provided is as legible as possible. If we are unable to confirm any of this information we will have to contact you again for better resolution which holds up delivery of your system. Please note that not all of these questions may relate to your type of crane. Simply indicate **N/A** (not applicable) where the questions do not relate to your crane.

\*\*\*\*\*

From the three hook style examples on the following pages of this worksheet, please select which pin or hook style [closest description] you have on your crane and then complete the following dimensional identifications:

A: \_\_\_\_\_ in – Pin diameter

B: \_\_\_\_\_ in – Outside width of lugs

C: \_\_\_\_\_ in – Lug thickness

D: \_\_\_\_\_ in – Lug thickness

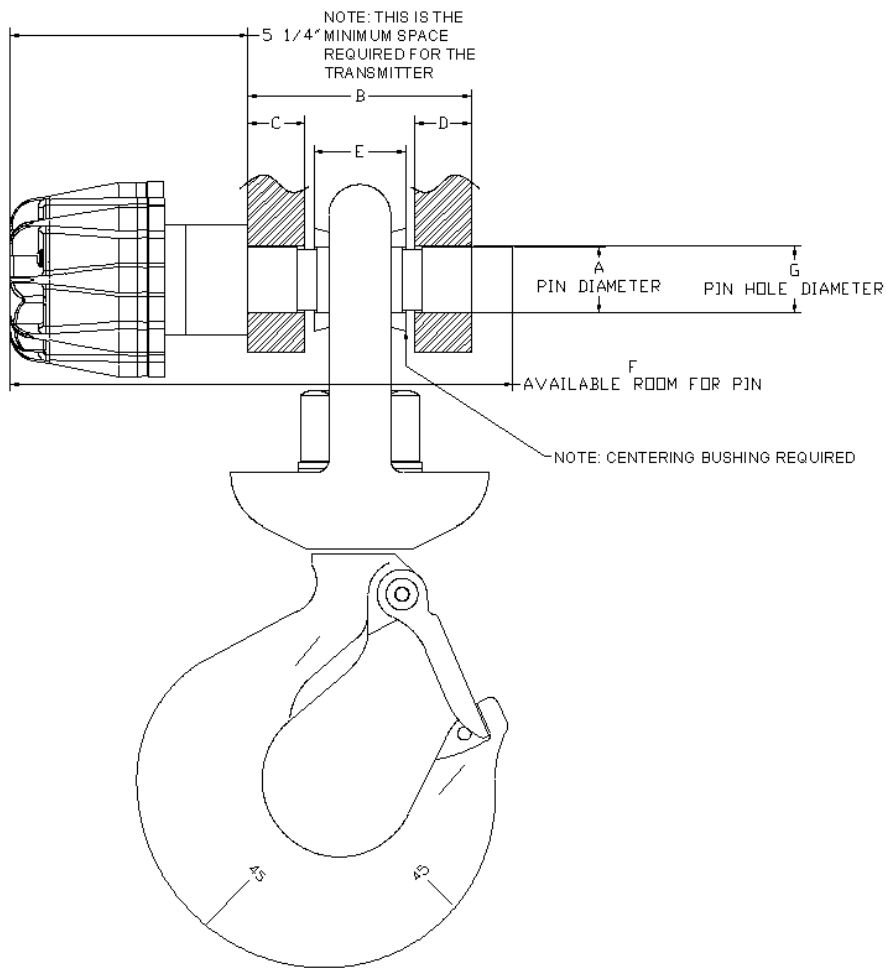
E: \_\_\_\_\_ in – Center lug width

F: \_\_\_\_\_ in – Total available room for load pin and transmitter

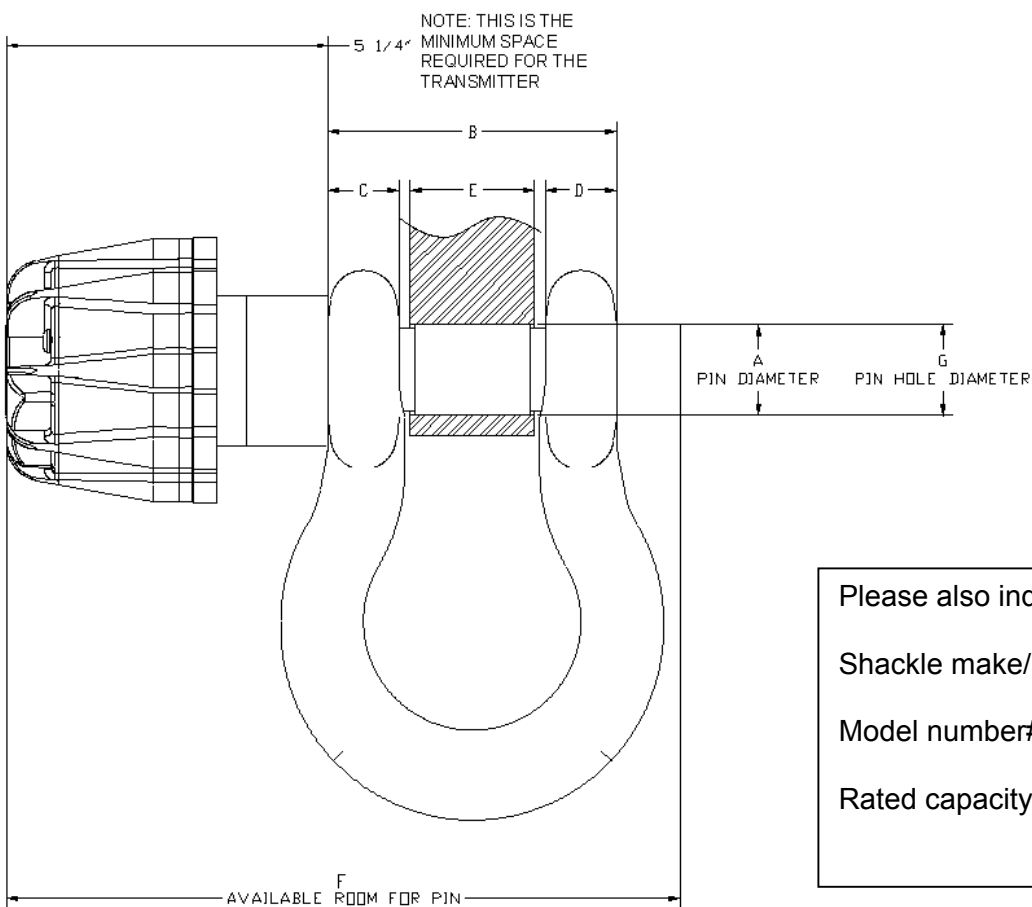
G: \_\_\_\_\_ in – Pin bore hole diameter

Notes:

\_\_\_\_\_  
\_\_\_\_\_  
\_\_\_\_\_



## A. Hook Style



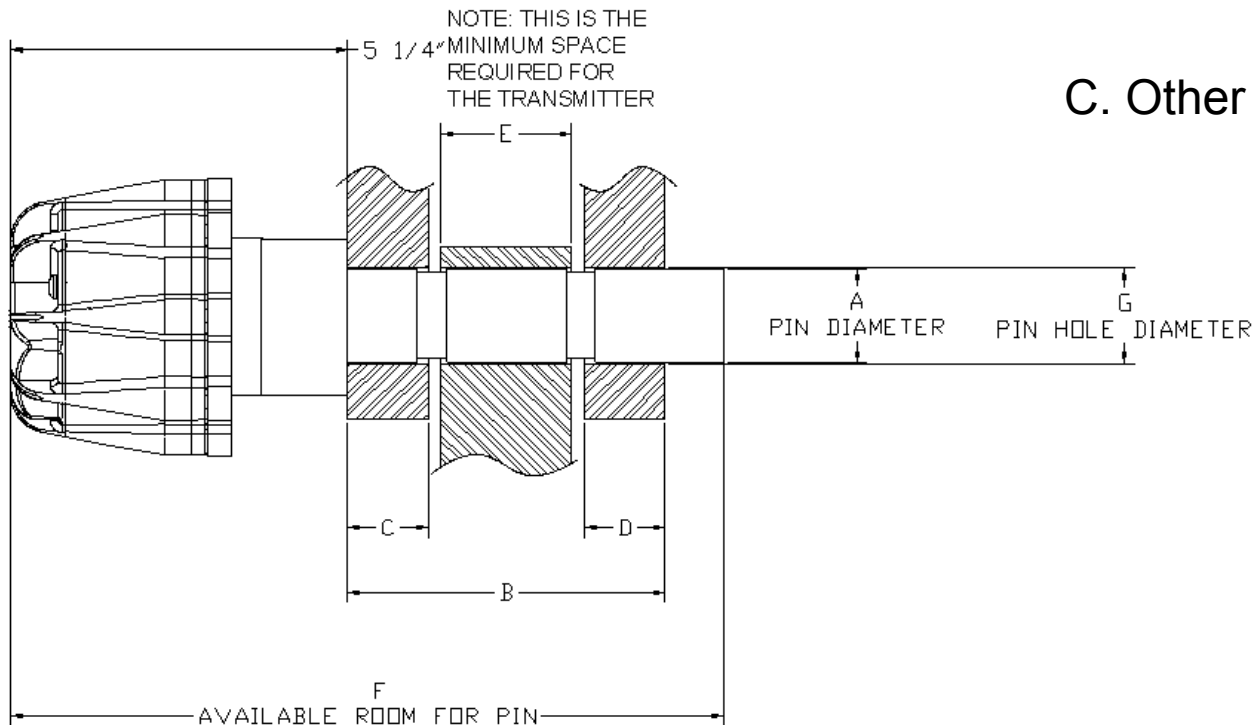
## B. Shackle Style

Please also indicate:

Shackle make/brand: \_\_\_\_\_

Model number#: \_\_\_\_\_

Rated capacity: \_\_\_\_\_



Please provide a description of how the pin fits in the hole. (Examples: tight, sloppy...):

---

Please provide digital pictures of the pin in place on your boom tip.

Please provide digital pictures of the pin bore hole. Also with the pin removed please describe the condition of the pin bore holes. (Examples: machined surface, drilled, flame cut...)

---

Circle one: Default display to be in **metric** or **pounds**? Please note: weight readout is in 100 pound increments.

Circle one: Displayed language **English**

**Spanish**

**Both**

**Electrical power** available in cab: \_\_\_\_\_VDC or \_\_\_\_\_VAC (Please note: display panel requires 12-28VDC)

Is the crane operating in a **hazardous environment**? (examples: on or near oil/drilling rigs, fuel terminals, refineries) which require hazardous area rated transmitters? **YES / NO**

**If you have a winch:**

Please provide maximum rated **single-line-pull** in pounds for:

Main winch: \_\_\_\_\_

Please provide **wire rope diameter** in inches for:

Main winch: \_\_\_\_\_

Please provide **dead end/becket pin sizes** in inches for:

Main winch: \_\_\_\_\_

Please circle all **parts-of-line** reeving **MAXIMUM** capability which apply for each winch:

Main winch: **1 – 2** \_\_\_\_\_

Do you require the **Anti-2-block option** with this load pin system: **YES/NO?** \_\_\_\_\_ **Notes:**

\_\_\_\_\_

**Alarms outputs for crane function interrupt's – if applicable**

In addition to an Audio and Visual alarm at the display panel, the system will also display Type Of Alarm, example "Two-block, MAIN WINCH". In addition to the visual and audible display panel alarms, the following option is available:

**Option 1:** The panel incorporates a simple white output wire as a part of the standard wiring harness included with each system. The white wire is Normally Hot in all non-alarm conditions, going Cold in any alarm condition. Normally Hot can be switched to Normally Cold right at the display panel in the crane. You may connect this wire to external alarms, a single function kick out or a series of function kick outs. Do you require this output option? **YES / NO?** \_\_\_\_\_

**If yes please describe which alarm condition in which you require output signals for kick outs:**

\_\_\_\_\_

Please note: Any changes to your Wireless Load Pin System due to incomplete and or inaccurate information provided may incur additional costs.